



ADSORBER MA-RV

For ATEX Zones | Robust | Low Maintenance Costs

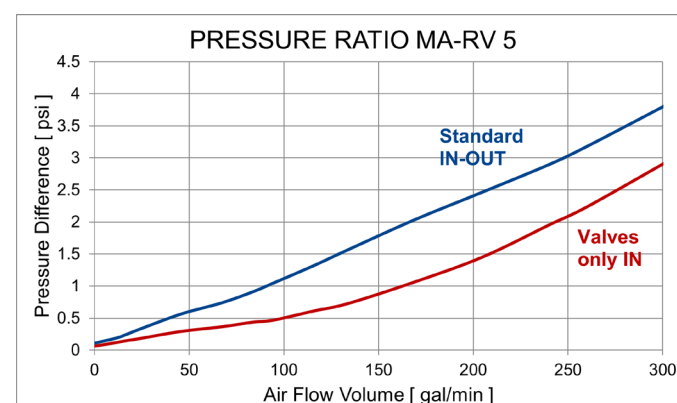
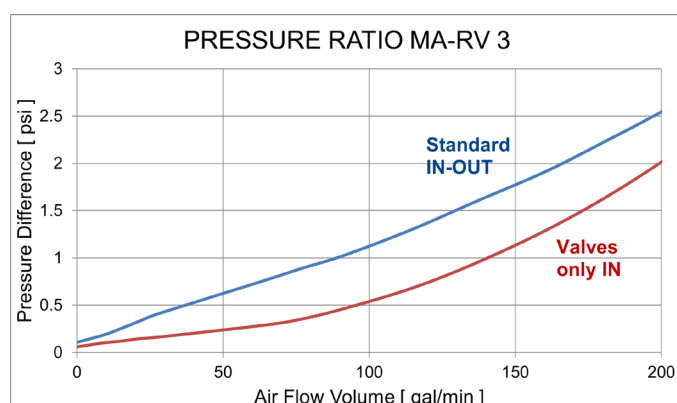
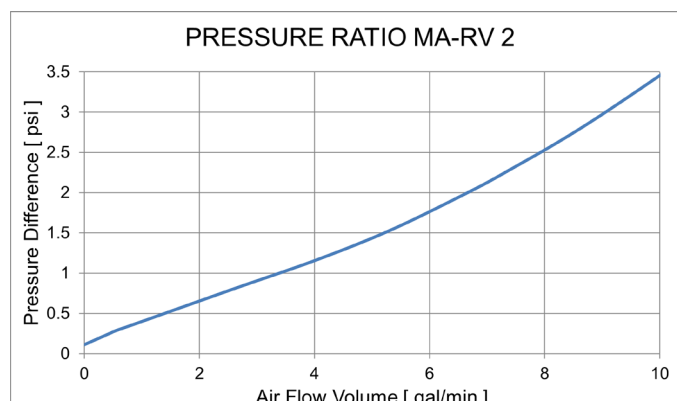
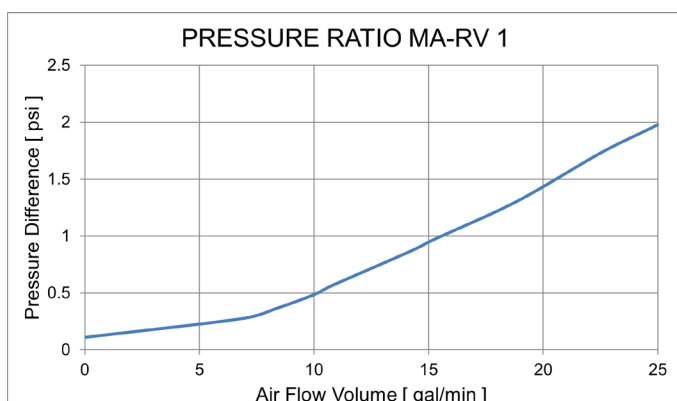
GIEBEL Adsorbers® of the series MA-RV consist of an aluminum housing with a valve part. They are available with FKM or EPDM seals and are suitable for the aeration of aggressive substances or in rough environments. Maintenance of the wear components is fast and cost-effective. The adsorbers of this series can be used in zone II 2 G / D IIC T4 according to ATEX product directive 2014/34/EU.



Suitable for hydraulic power packs, gearboxes, storage tanks and Barrels & IBCs.



	MA-RV 1L	MA-RV 2L	MA-RV 3M	MA-RV 3L	MA-RV 5M	MA-RV 5L	MA-RV 5XL
Total Weight [lb]	1,10	3,74	5,95	8,15	11,24	14,99	18,73
GIEBEL Xdry® [lb]	0,37	1,21	1,87	3,19	4,63	7,27	10,14
Color-change capacity [fl. oz.]	2,02	6,52	10,07	17,17	24,85	39,05	54,44
Height [inch]	5 15/16"	9 3/16"	11 7/16"	15 3/8"	12 5/8"	16 9/16"	20 1/2"
Diameter [inch]	2 3/8"-2 1/2"	3 1/2"-4 23/32"	4 5/16"-5 1/2"	4 5/16"-5 1/2"	5 7/8"-7 1/16"	5 7/8"-7 1/16"	5 7/8"-7 1/16"
Connection	NPT, BSP, Metric	NPT,BSP, Metric, Slipfit	NPT,BSP, Metric, Slipfit	NPT,BSP, Metric, Slipfit	NPT,BSP, Metric, Slipfit	NPT,BSP, Metric, Slipfit	NPT,BSP, Metric, Slipfit
Valves [IN-OUT]	0 - 0	0 - 0	0 - 0	0 - 0	0 - 0	0 - 0	0 - 0

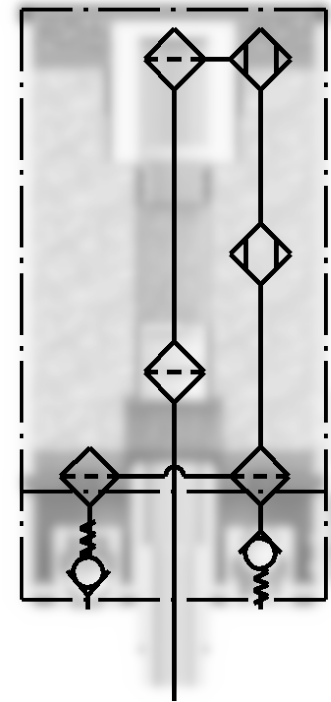
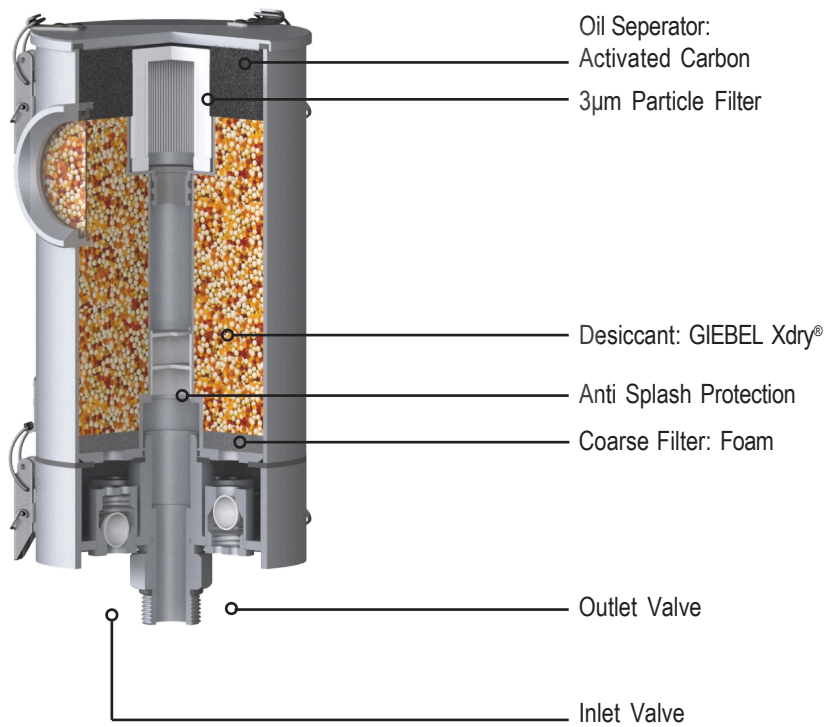


Use	Drying of supply air
Material	Aluminum, acrylic glass, stainless steel, FKM, EPDM GIEBEL Xdry®, activated carbon
Substance	Hydraulic oil, Transmission oil, Biological oil, Vegetable oil, Transformer oil, Insulating oil, AdBlue (Urea), Diesel fuel, Isocyanates, Polyols, Anhydrite, Flammable liquids (fuels, solvents, etc.) / ... SKYDROL, HyJet IV&V, Brake fluids / ... Petrol, Kerosene, Acetic acid, Polyethylene glycol, Isopropyl alcohol, Methanol, Diethylene glycol / ... Acetone, Butyl acetate, Ethanol, Ethyl acetate
Refillable	Yes
Application ATEX 2014	Yes
Offshore suitable	No
Adsorbent quantity	0,44 – 10,14lb (GIEBEL Xdry®)
Valves	Yes
IP protection class	IP 66
UV resistance	Very high
Temperature range	-40°F ... 176°F / 320°F
Corrosivity class	C4
REACH compliant	Yes
RoHS compliant	Yes
Customs tariff number / Country of origin	84213925 / Germany

GIEBEL FilTec Inc.
470 Commerce Drive,
Suite 668, Peachtree City,
GA,30269

(+1) 943-257- 8221
Info.us@gf-dry.com
www.giebel-adsorber.com

QUALITY FOR EVERY BREATH.



MORE INFORMATION

More about our adsorber series, accessories and spare parts, as well as data sheets for download on www.giebel-adsorber.com.

