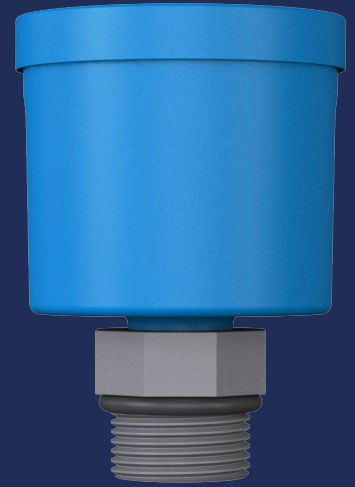




ADSORBER HS-D

Versatile Use | Easy Maintenance | Cost Effective

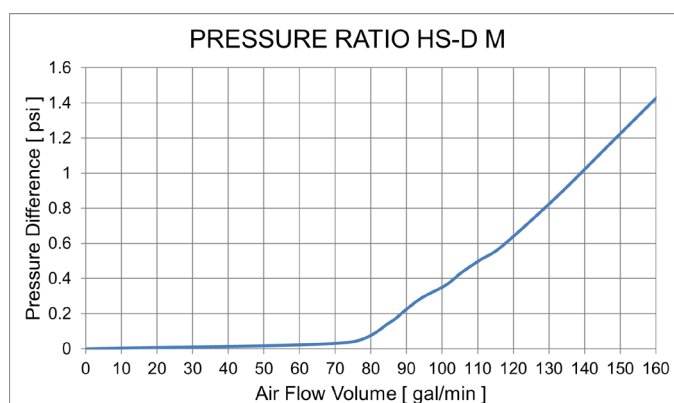
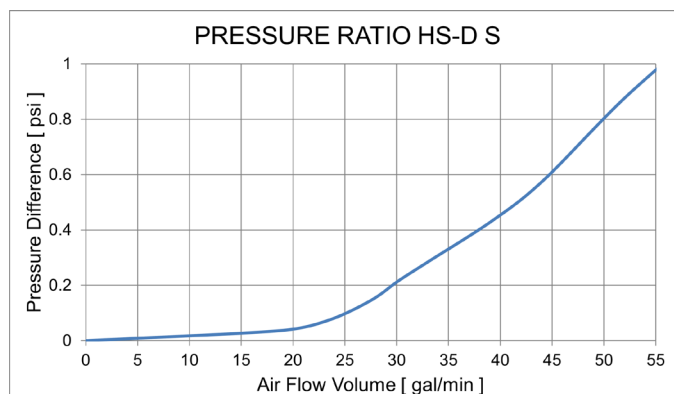
Adsorbers of the HS-D series are used to protect against the ingress of water droplets in gears. While successfully preventing water from getting inside the system, it's still able to breathe. In areas where the gear is being cleaned with water or even in outdoor use, the gear's oil is protected against the contamination with water. This is achieved by an ePTFE filter at the core of the HS-D's robust PA6 housing. It's 0.3 micron pores allow air to travel while holding back any water or oil, while also ensuring low pressure build-up.



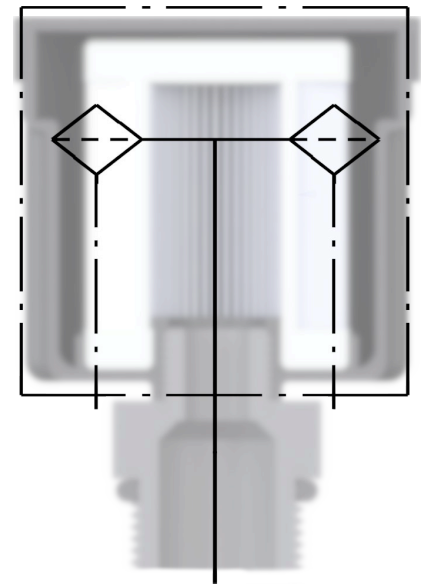
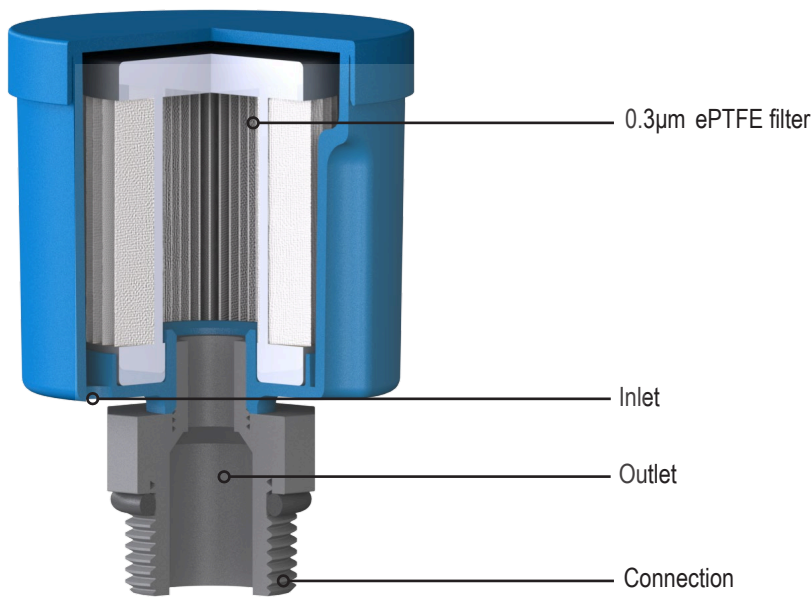
Suitable for gearboxes.



	HS-D S	HS-D M
Total Weight [lb]	0,11	0,22
Filter [micron]	0.3 ePTFE	0.3 ePTFE
Hydrophobic & oleophobic	Yes	Yes
Height [inch]	1 15/16"	2 5/16"
Diameter [inch]	1 3/16" - 1 5/16"	2 3/8" - 2 1/2"
Connection	BSP, Metric	BSP, Metric



Use	Keeping water or oil droplets out of gears
Material	Polyamide (PA), polyvinyl chloride (PVC), FKM, ePTFE
IP protection class	IP 68
UV resistance	High
Temperature range	-40°F ... 176°F
Corrosivity class	CX
REACH compliant	Yes
RoHS compliant	Yes
Customs tariff number / Country of origin	84213925 / Germany



MORE INFORMATION

More about our adsorber series, accessories and spare parts, as well as data sheets for download on www.giebel-adsorber.com.

