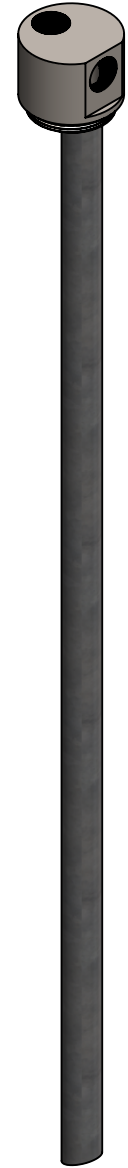
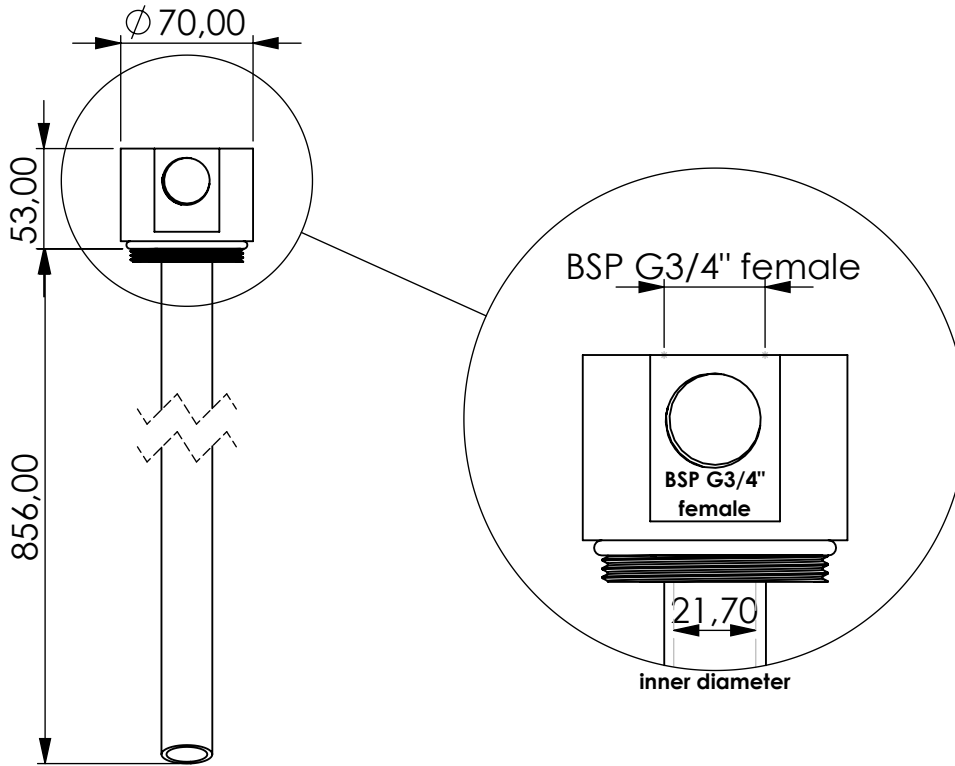


Suction lance



Suction rate (at 1.5m/s): 30L/min
Filling rate (at 3m/s): 60L/min

Product Code	SAL	-	BAR	-	SS	-	F	-	G34f	-	G34f	-	G2m
	Suction lance		For installation on a barrel		Material stainless steel		FKM seals		Connection for bypass BSP G3/4" female		Connection for Adsorber BSP G3/4" female		Connection for system BSP G2" male

 GIEBEL Adsorber® ...setting standards in aeration drying!		Date: 22.06.2023 Name: Daniel Zinic		Total weight (kg): 2.643	
		GIEBEL FilTec GmbH www.giebel-adsorber.com info@gf-dry.com		NAME: Suction lance SAL-BAR_SS_F_G34f_G34f_G2m	
		Article no.: 03.0000.16		Status approved Ratio 1:4	
				Format A4 Sheet / of 1 / 1	