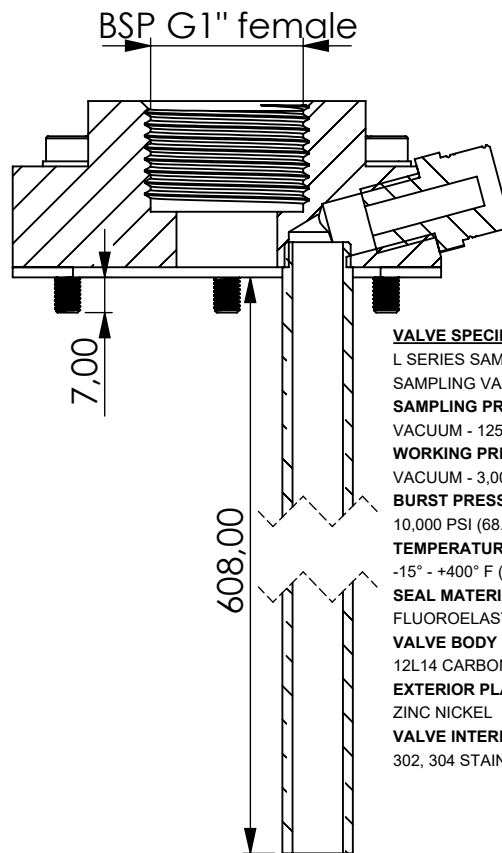
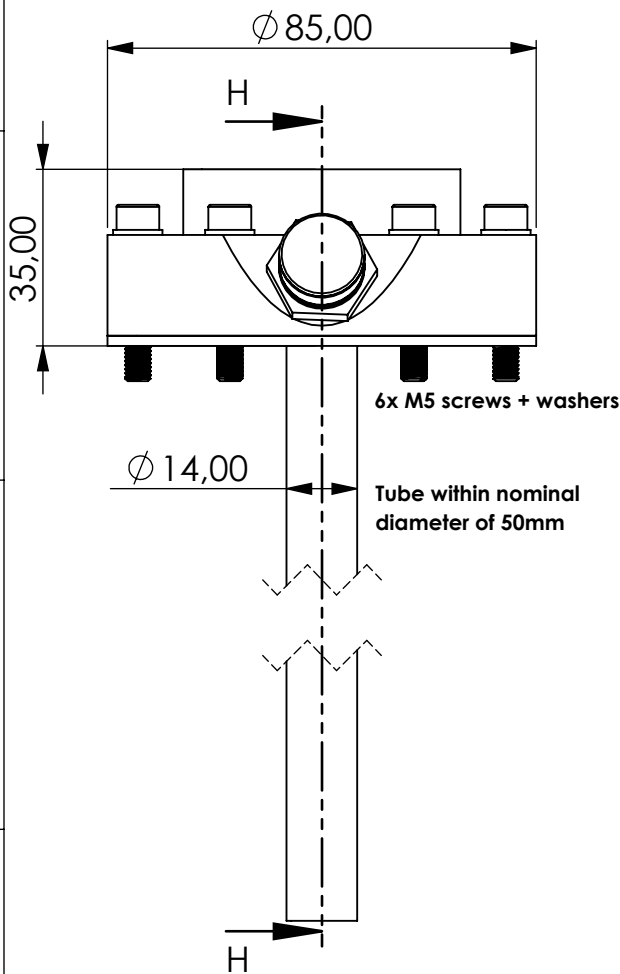
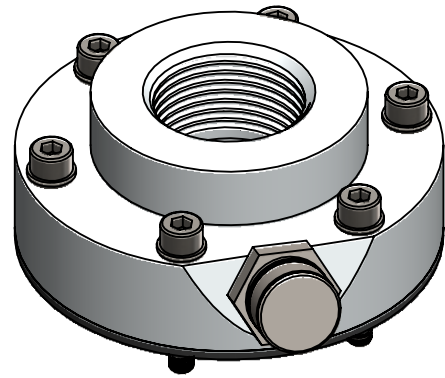


# Flange adapter



**VALVE SPECIFICATIONS:**  
 L SERIES SAMPLE VALVE L  
 SAMPLING VALVE 1/4-18 NPTF THREAD  
**SAMPLING PRESSURE:**  
 VACUUM - 125 PSI (VACUUM - 0.86 MPa)  
**WORKING PRESSURE:**  
 VACUUM - 3,000 PSI (VACUUM - 20.68 MPa)  
**BURST PRESSURE:**  
 10,000 PSI (68.9 MPa)  
**TEMPERATURE RANGE:**  
 -15° - +400° F (-26° - +204° C)  
**SEAL MATERIAL:**  
 FLUOROELASTOMER (FKM)  
**VALVE BODY MATERIAL:**  
 12L14 CARBON STEEL  
**EXTERIOR PLATING:**  
 ZINC NICKEL  
**VALVE INTERNALS:**  
 302, 304 STAINLESS STEEL

Product Code	<b>FLA</b>	-	<b>OE</b>	-	<b>LK73</b>	-	<b>AL</b>	-	<b>F</b>	-	<b>G1i</b>
	Flange adapter		Oil extraction		Bolt circle 73mm connection for system		Material Aluminium		FKM seals		Connection for Adsorber BSP G1" female

Total weight (kg): 0.53

NAME:

**Flange adapter**  
**FLA-OE\_LK73\_AL\_F\_G1i**

Article no.:  
**08.2131.22**

Status approved

Format A4

Ratio 1:1.5

Sheet / of 1 / 1



**GIEBEL Adsorber®**  
 ...setting standards in aeration drying!

GIEBEL FilTec GmbH  
 gibel-adsorber.com  
 info@gibel-adsorber.de