



DESIGNED AND PRODUCED IN GERMANY

Suction Lance

Field of application | Connection of a barrel pump



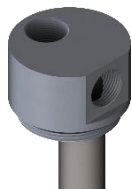
With the use of a suction lance, a barrel pump and off-line filter system can be connected to hydraulic tanks and the substance can be removed very easily directly from the bottom. The simultaneous use of a GIEBEL Adsorber dries the incoming air and protects the plant from humidity. Available with a BSP 2" thread for 216.5 liter barrels and according to DIN24557 for hydraulic tanks, the suction lance is resistant to numerous substances.



Hydraulic tank



Barrels



	SAL-BAR 1-By	SAL-BAR 2-By	SAL-LK 1-By	SAL-LK 2-By
Total Weight [kg]	1,9	2,0	2,2	2,4
Diameter [mm]	70	70	85	85
Height [mm]	909	909 / 392	900	909 / 392

Use	Connection Barrel Pump or Oil Bypass Filtersystem
Material	Aluminium / Stainless steel FKM / EPDM
Connection Pump	BSP G 1/2" female (BC 41) BSP G 1" female (BC 73 2-By) BSP G 3/4" female (BC 73 2-By & 2")
Connection Adsorber	BSP G 3/4" female (2") BSP G 1/2" female (BC 41) BSP G 1" female (BC 73 2-By & 1-By)
Connection System	BSP G 2" male (Barrel) BC73mm / DIN24557 (Hydraulics)
Use acc. ATEX 2014 / Offshore suitable	Yes / Yes
Temperature Range	-40°C ... +150°C
REACH konform	Yes

Online for Download:



Adsorber, Accessories & Spare Parts
shop.giebel-adsorber.de
Order in our Online Shop
24/7

We would be pleased to advise you personally
+ 49 79 46 94 44 01-0 |
info@giebel-adsorber.de |
giebel-adsorber.com